

## Your ADSL PCI Modem Setup Guide

Follow our exclusive guide below to get your new modem installed quickly and easily. This guide is based upon the Windows 98 operating system but most versions of Windows will be similar to set-up. For other operating systems, please refer to the manual provided on the included CD.

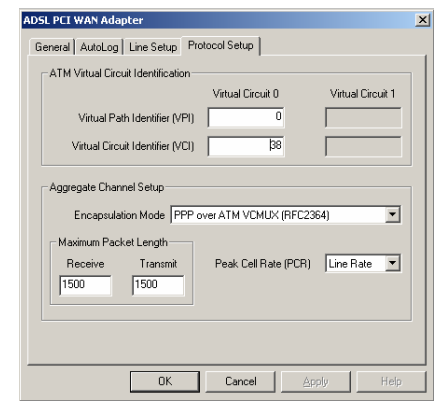
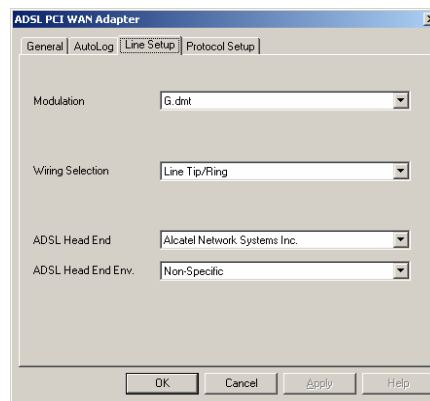
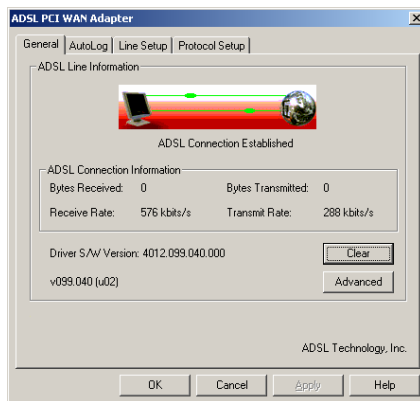
- Follow the manufacturers guide provided with your PC for instructions on how to install your internal modem card. Here are some additional points to remember when installing:
  - Place your computer on a flat clean surface and unplug all leads and peripherals.
  - Opening your PC's case could invalidate any warranties you may have. Check with your computer supplier to find out if this is the case, as your warranty may require a professional installation.

- Once your modem card is installed, turn your PC **On**. When Windows loads, the Add New Hardware Wizard will automatically detect the PCI modem. When prompted with the Found New Hardware Wizard, click 'Next'. Insert the CD and cancel the installation screen. Select the option of 'search for a suitable driver' or 'Install the software automatically'. Then on the next screen, you may be presented with further options, if so select 'CD ROM' drivers, then click 'Next'. Then follow the wizard through until it is complete and presents a finished button.



- The install process will now create three icons on your desktop: **ADSL PCI Modem Wizard**, **ADSL PCI Modem** and **ADSL PCI Control Panel**. Click on the **PCI Control Panel** icon. To view the advanced settings in the window that appears, hold the **Alt** key and press the **C** key. Three additional tabs will appear: **AutoLog**, **Line Setup** and **Protocol Setup**. The settings to enter on each tab are shown in the table below (note that **AutoLog** should be disabled, this is for fault diagnosis only):

<b>Line Setup:</b>	<b>Protocol setup:</b>
Modulation: G.dmt	VPI: 0
Wiring selection: Line Tip/Ring	VCI: 38
ADSL Head End: Alcatel Network Systems Inc.	Encapsulation mode: PPP over ATM VCMUX
ADSL Head Env: Non-Specific	



- Click OK to close the window and save your settings. Your modem card is now set-up and you are ready to connect.

- Open the ADSL Connection by clicking on the **ADSL PCI Modem**. In the window that appears you should enter your broadband username. Your broadband username is different to the username you choose during registration. Check the table on the right to see what yours is (your broadband username is also sent by email once your broadband is activated). Enter your password as normal and click Dial (or Connect). Congratulations, you're now connected to broadband!

<b>Your broadband username</b>	
PlusNet (www.plus.net):	username@plusdsl.net
Force9 (www.force9.net):	username@f9.co.uk
Free-Online (www.free-online.net):	username@freeonline.net
PlusNet UK (www.plus.net.uk):	username@plusnet.co.uk

**Turn over for your handy troubleshooting guide**